



ASA-RT s.r.l.

Strada del Lionetto 16/a, 10146 Torino, ITALY
 Tel +39 011 796333 - FAX +39 011 712339
 E-Mail: info@asa-rt.com http:// www.asa-rt.com

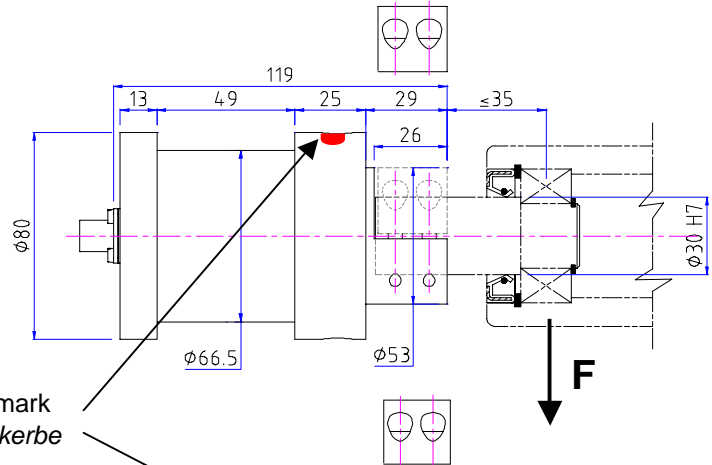
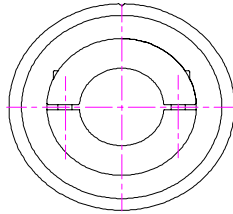
**ROLL LOAD CELL
 ROLLEN-MESSDOSE**

**ATB - CS
 ATB - 2CS**

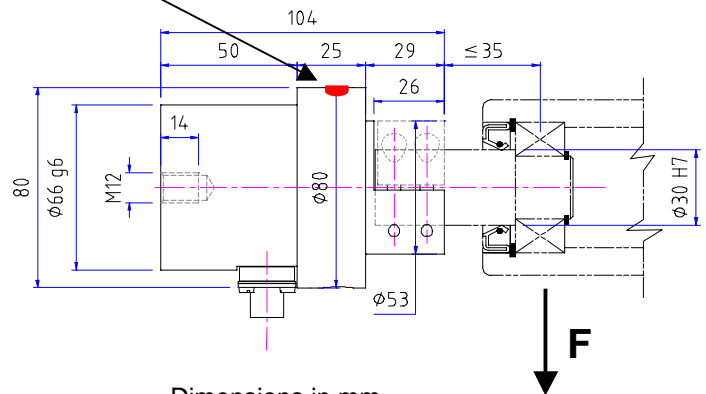
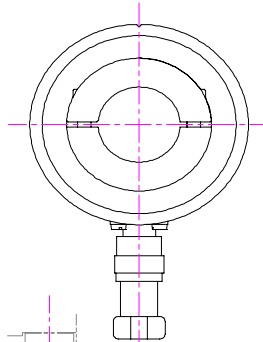
Data sheet CS / 99 / 6 Datenblatt



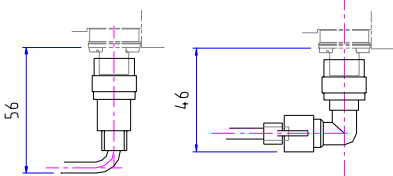
ATB - CS



ATB - 2CS



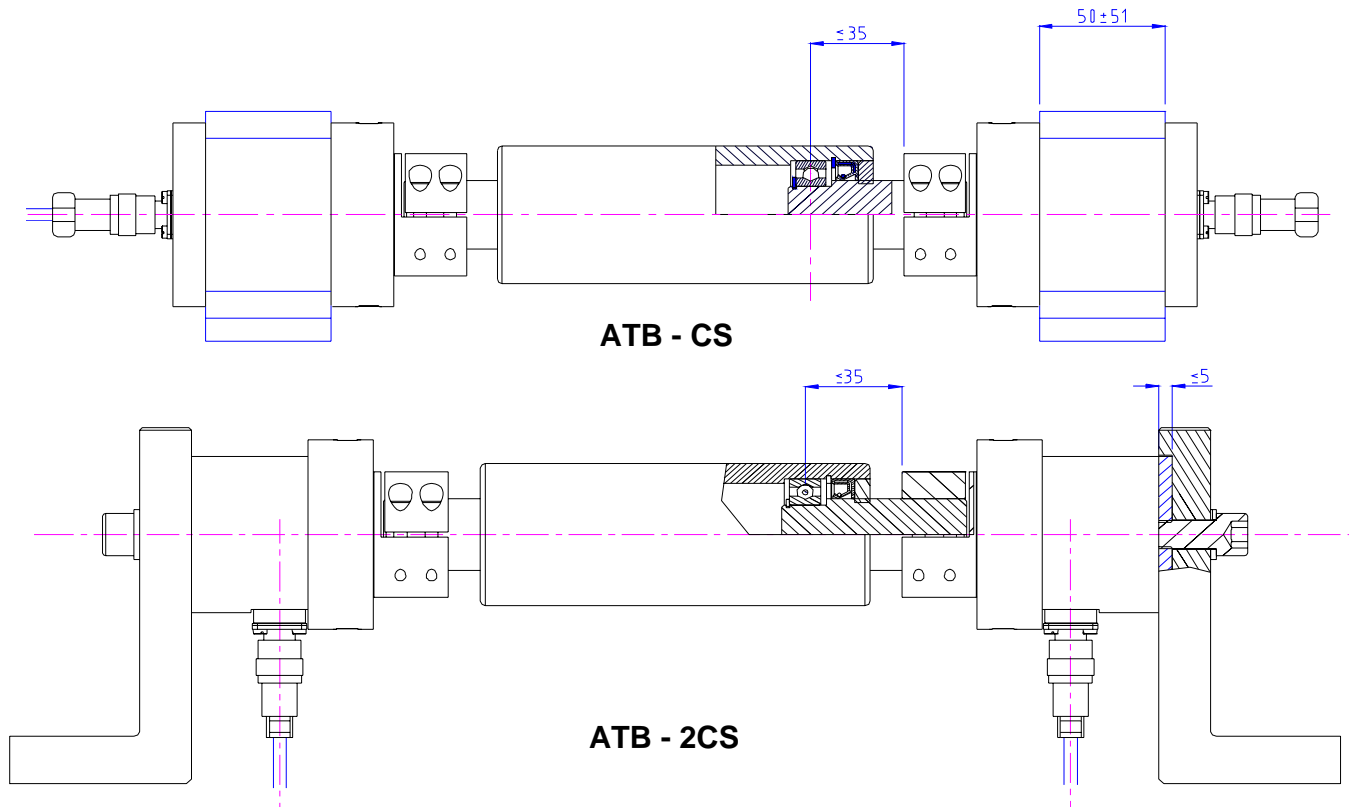
Dimensions in mm
 Abmessungen in mm



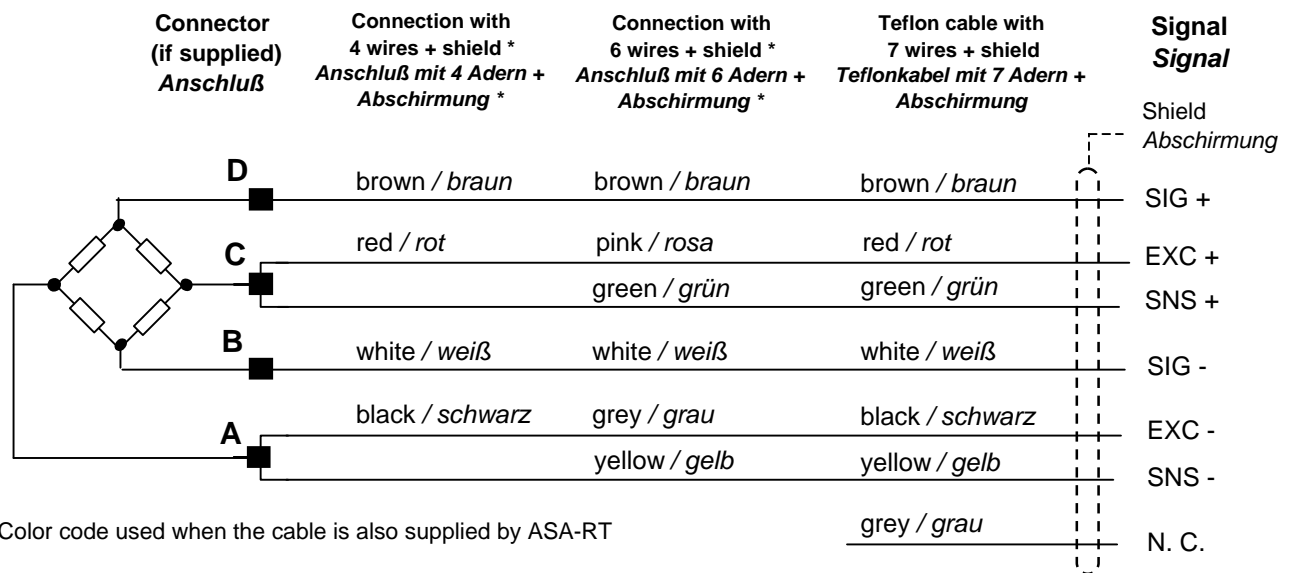
Type Typ	Type Typ	Nominal Force F Meßbereich F	Type Typ
ATB-CS / 50	ATB-2CS / 50	50 N	Avional
ATB-CS / 125	ATB-2CS / 125	125 N	Steel Stahl
ATB-CS / 250	ATB-2CS / 250	250 N	
ATB-CS / 500	ATB-2CS / 500	500 N	
ATB-CS / 750	ATB-2CS / 750	750 N	
ATB-CS / 1000	ATB-2CS / 1000	1000 N	

Technical Data		Technische Daten	
- Limit Load	200% F	- Grenzlast	
- Ultimate Load	> 300% F	- Bruchlast	
- Accuracy	0.2% F	- Genauigkeit	
- Sensitivity	1.2 ... 1.4 mV / V	- Empfindlichkeit	
- Repeatability (total error hysteresis and non-linearity)	< 0.3% F	- Wiederholgenauigkeit (gesamt Hysteresis-Abweichung und Nullpunktabweichung)	
- Zero bridge balance	± 1% F	- Nullpunktabweichung	
- Temperature effect on zero	± 0,1% F / 10° C	- Temperatureinfluß auf den Nullpunkt	
- Temperature range	(+10...+60° C) or (+10...+120° C)	- Arbeitstemperaturbereich	
- Bridge resistance	350 ohm	- Brückenwiderstand	
- Maximum supply voltage	12 Vdc	- Max. Speisespannung	
- Protection Level	IP54	- Schutzgrad	
- Connector "N"	IPT06A-8-4S-SRN436	- Anschlußstecker "N"	

**ASSEMBLING EXAMPLE
EINBAUBEISPIELE**



**ELECTRICAL CONNECTION
ELEKTRISCHE ANSCHLÜSSE**



**ORDER CODE
BESTELLCODE**

