



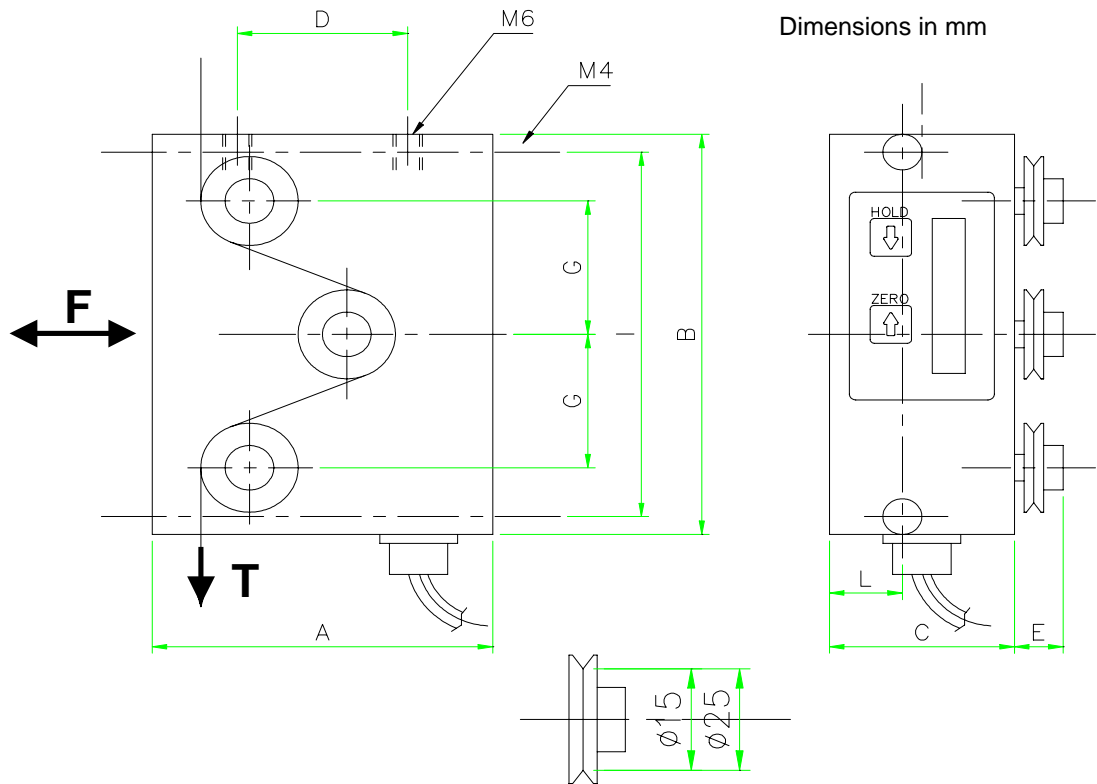
**ASA-RT s.r.l.**

Strada del Lionetto 16/a, 10146 Torino, ITALY  
 Tel +39 011 796333 - 720467 - FAX +39 011 712339  
 E-Mail: info@asa-rt.com http:// www.asa-rt.com

**TENSION MEASUREMENT UNIT  
 with built-in measuring amplifier**

**A3VD**

Data sheet A3VD / 03 / 1



The tension measurement unit type A3V/D, is used during the production process to measure the tension of cables, fibres, filaments and fine wires. Easy to install and particularly strong structured, the unit can be used, in special cases, in the production lines with a speed up to 40m/s.

The unit is a three pulleys stand-alone tension measurement system, with the central pulley assembled on a load cell.

The unit includes an acquisition card, with a flash-eprom fast processor, a 24 bit professional acquisition circuit, and a membrane keyboard with 4 digit display.

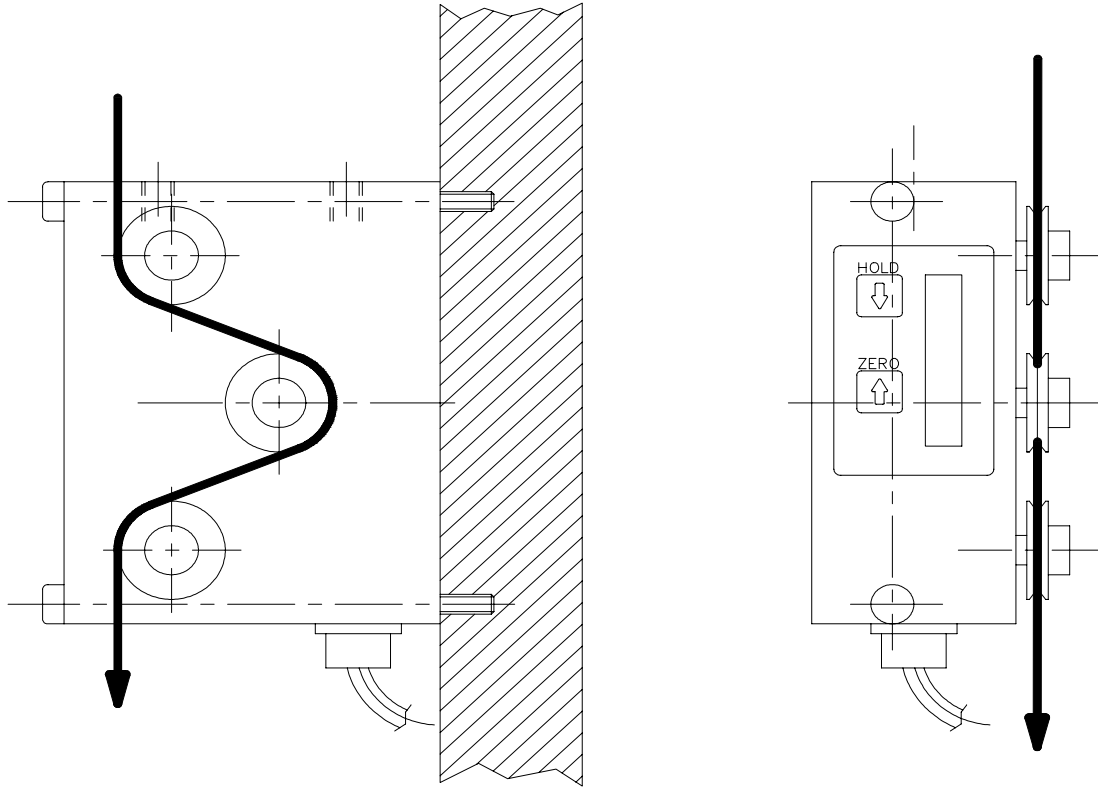
All operating unit parameters can be selected throughout the keyboard, the display and the ASCII serial line: zero, gain (full scale in engineering unit), pass-band of the filter on the signal, etc.

In normal operating state, the 4 digit display visualises the tension measurement, processed according to the actual parameters.

Type	Tension on material	Pulley Diameter	A	B	C	D	E	G	I	L
A3VD / 1 / A	1.25 N	15	80	90	38	40	10	30	82	15
A3VD / 2 / A	2.5 N									
A3VD / 5 / A	5 N									
A3VD / 10 / B	10 N	25	80	110	38	40	10	40	102	15
A3VD / 20 / B	20 N									

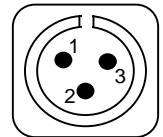
Technical Characteristics	
- Ultimate load	> 500 % T
- Accuracy	0.2% F
- Temperature effect on zero	± 0,1% F / 10°C
- Temperature range	(+10 ...+40°C)
- Nominal power supply	5 Vdc ± 5%
- Load cell material	Avional
- Connector "S"	464-397
- Pulley material	Nickeled Aluminium, Ceramic Aluminium, Hardened Steel

### ASSEMBLING EXAMPLE



### ELECTRICAL CONNECTION

Pin	Signal	Cable with 2 wires*	Function
1	+5 Vdc	- Brown	- Power supply (+)
2			
3	GND	- Black	- Power supply (-) and shield



\*Color code used when the cable is supplied by ASA-RT

### ORDER CODE

