



ASA-RT s.r.l.

Strada del Lionetto 16/a, 10146 Torino, ITALY
 Tel +39 011 796333 - 720467 - FAX +39 011 712339
 E-Mail: info@asa-rt.com http:// www.asa-rt.com

Torque Transducer
Messdose zur Drehmomentmessung

ATB - NR

Data sheet

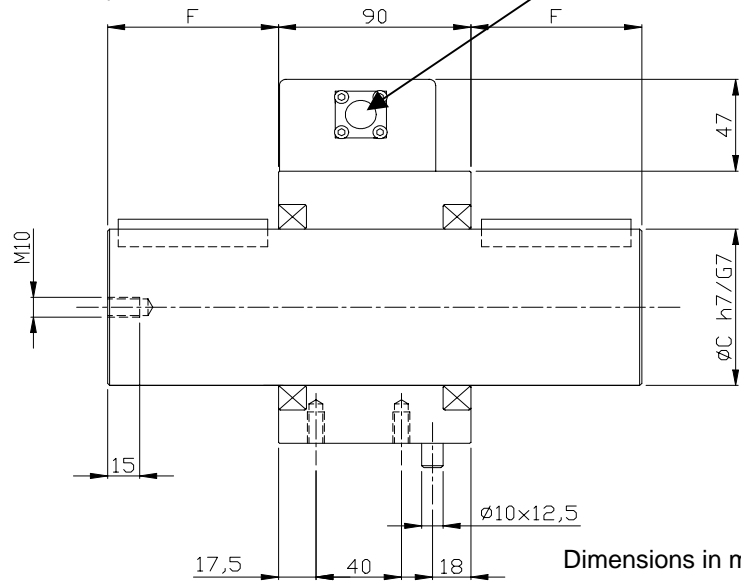
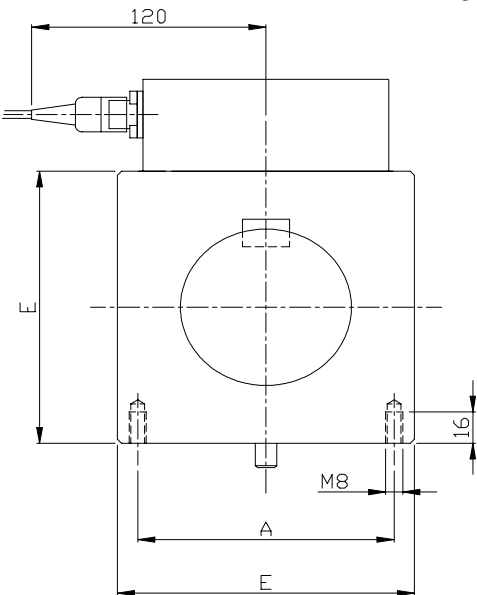
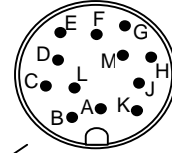
NR / 01 / 3

Datenblatt



Signal transmission without slip-rings (no maintenance)

On request (DIN 5482)
 Auf Anfrage (DIN 5482)



Dimensions in mm
 Abmessungen in mm.

Type Typ	Nominal torque (T) Meßbereich (T)	A	C	E	F	Round-end key* Keil*
ATB-NR / 100	100 Nm	104	60	119	60	15x11
ATB-NR / 250	250 Nm	104	60	119	60	18x11
ATB-NR / 500	500 Nm	110	70	130	70	20x12
ATB-NR / 750	750 Nm	110	70	130	70	20x12
ATB-NR / 1000	1000 Nm	110	70	130	70	20x12
ATB-NR / 2500	2500 Nm	120	80	140	90	22x14
ATB-NR / 5000	5000 Nm	120	80	140	90	22x14
ATB-NR / 7500	7500 Nm	140	100	160	110	28x16
ATB-NR / 10000	10000 Nm	140	100	160	110	28x16

* with solution "CH" and "CL"

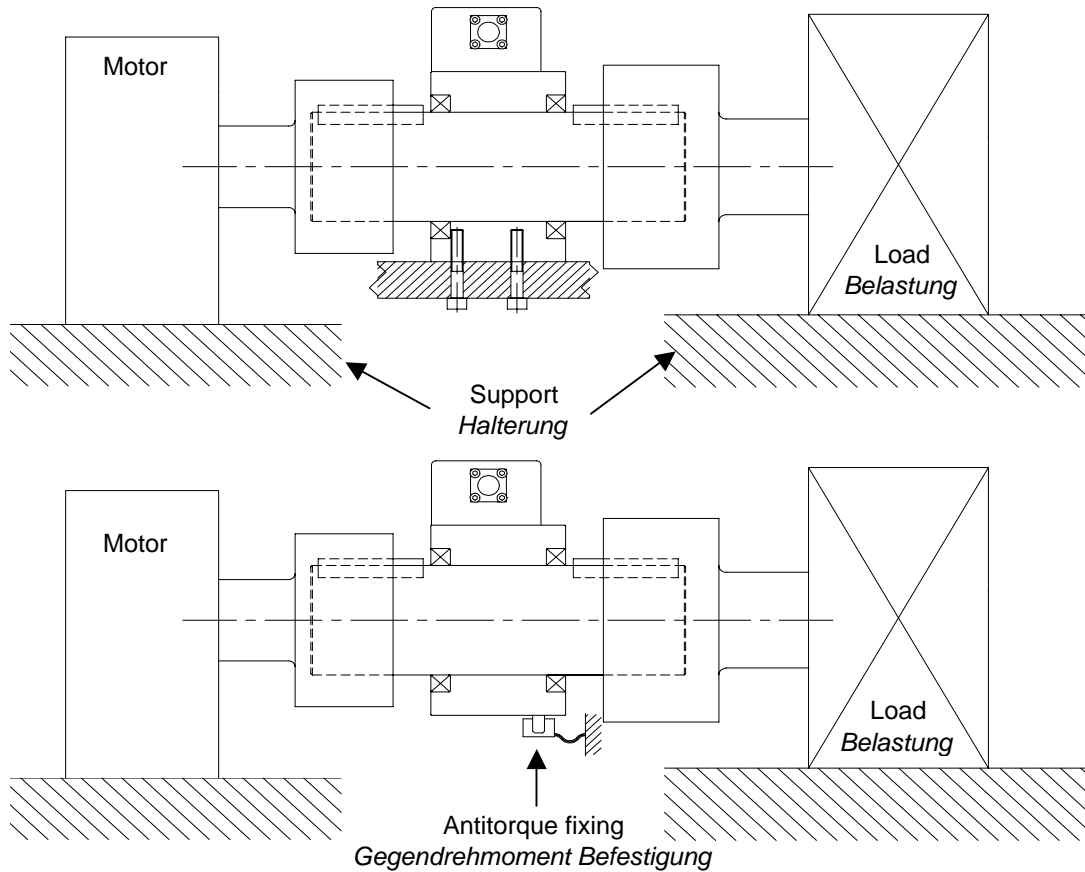
* Mit Ausführung "CH" und "CL"

Technical Data

Technische Daten

- Ultimate load	> 300% T	- Bruchlast
- Accuracy	0.5 % T	- Genauigkeit
- Sensitivity	1÷1,3 mV / V	- Empfindlichkeit
- Repeatability (total error hysteresis and non-linearity)	< 0.3 % T	- Wiederholgenauigkeit (gesamt Hysteresis-Abweichung und Nichtlinearität)
- Zero bridge balance	±5 % T	- Nullpunktabweichung
- Temperature effect on zero	± 0.1 % T / 10 ° C	- Temperatureinfluß auf den Nullpunkt
- Temperature range	(+10 ...+60°C)	- Arbeitstemperaturbereich
- Bridge resistance	350 Ohm	- Brückenwiderstand
- Maximum speed	3000 Rpm	
- Protection Level	IP54	- Schutzgrad
- Material	Steel / Stahl	- Material
- Connector "L"	KV-120 / 12	- Anschlußstecker "L"
- Power supply	24Vac / 50Hz	- Speisung
- Output	RS485	
- Measurement updating	0÷10V / 4÷20mA 12,7 Hz	- Ausgang

**ASSEMBLING EXAMPLE
EINBAUBEISPIELE**



**ELECTRICAL CONNECTION
ELEKTRISCHE ANSCHLÜSSE**

Connector Anschlußstecker	Signal	Connection with 6 wires Anschluß mit 6 Adern	Function	Funktion
A	24Vac	brown / braun	- Power Supply	- Speisung
B	24Vac	white / weiß	- Power Supply	- Speisung
C	EARTH	-	- Connection to the metal case	
D	AGND	yellow / gelb	- Analog output common pin	
E	ANA-OUT	green / grün	- Analog Output 0..10V / 4-20mA	- Analog Ausgang 0..10V / 4-20mA
F	-	-		
G	-	-		
H	-	-		
J	RX/TX+	pink / rosa	- Connection RS485 (+)	- Anschluß RS485 (+)
K	RX/TX+	grey / grau	- Connection RS485 (-)	- Anschluß RS485 (-)
L	-	-		
M	-	-		

* Color code used when the cable is also supplied by ASA-RT

**ORDER CODE
BESTELLCODE**

