

Type Modell	A	B	ATB-P		ATB-PE		D	E	L	Sol. A	Sol. C	V	Z	M	N
			I	C	I	C				Sol. B	Sol. D				
			G		G					G					
ATB-P/PE25	105	32	70	50	90	60	12	32	10	23	---	6,5	3	9	2
ATB-P/PE50			75	60			15	35	11						
ATB-P/PE100			17	40			12								
ATB-P/PE140	125	40	95	70	105	70	20	47	14	32	26	6,5	4	10	2
ATB-P/PE150 (F ≤ 1500)							25	52	15						
ATB-P/PE150 (F > 1500)							25	52	18						
ATB-P/PE300	175	57	135	100	150	100	35	80	21	45	36	9	4	15	3
ATB-P/PE310							40	80	23	50	---				
ATB-P/PE600	225	67	175	130	190	130	50	110	27	65	51	11	4	16	6
ATB-P/PE1000	264	72	220	160	235	160	65	140	33	70	66				

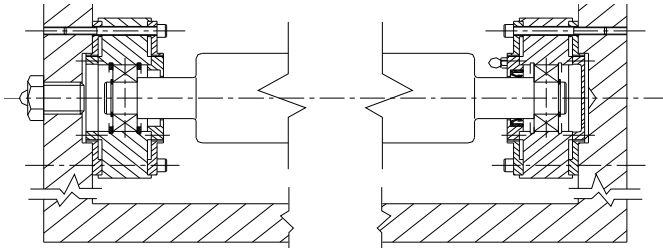


Type Modell			Nominal Force F Nominalmessbereich F									
ATB-P/PE25	ATB-P/PE50	ATB-P/PE100	1000N	750N	500N	350N	250N	150N	125N	100N	80N	50N
ATB-P/PE140		ATB-P/PE150					1500N	1000N	750N	500N	350N	200N
ATB-P/PE150			5000N	4000N	3000N	2000N						
ATB-P/PE300		ATB-P/PE310	7500N	6000N	4500N	3000N	2000N	1500N	1000N	750N		
ATB-P/PE600			10000N	6000N	3000N	2000N	1500N	1000N				
ATB-P/PE1000			25000N	10000N	5000N	2500N						

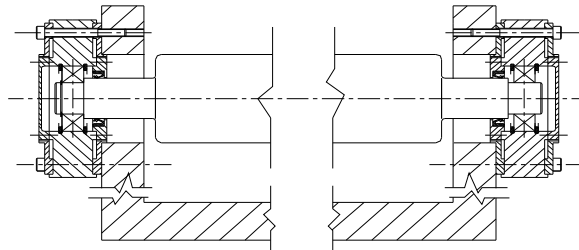
Technical data	Technische Eigenschaften		
- Max. working load (limit load)	200% F		
- Ultimate load	> 500% F		
- Sensitivity	1,2 ... 1,4 mV / V		
- Accuracy	< 0,2 % F		
- Repeatability	< 0,2 % F		
- Combined error	< 0,3 % F		
- Zero bridge balance	± 1 % F		
- Temperature effect on zero	± 0.1% F / 10 °C		
- Nominal temperature	+10...+60 °C	+10...+120 °C	+10...+120 °C
- Working temperature	-10...+80 °C	-10...+130 °C	-10...+150 °C
- Bridge resistance	350 Ohm		
- Maximum supply voltage	12 Vdc		
- Protection level	IP54		
- Material	Steel or stainless steel Stahl oder rostbeständiger Edelstahl		
	- Max. Gebrauchslast (Grenzlast)		
	- Bruchlast		
	- Empfindlichkeit		
	- Genauigkeit		
	- Wiederholgenauigkeit		
	- Totalfehler		
	- Nullpunktabweichung		
	- Temperatureinfluss auf den Nullpunkt		
	- Nominaltemperaturbereich		
	- Arbeitstemperaturbereich		
	- Brückenwiderstand		
	- Max. Speisespannung		
	- Schutzgrad		
	- Material		

ASSEMBLING EXAMPLE EINBAUBEISPIELE

Automatic greasing /
Automatische
Schmierung



Hand greasing /
Manuelle Schmierung



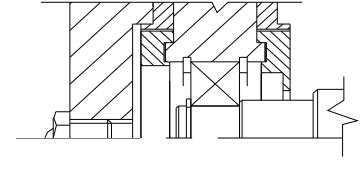
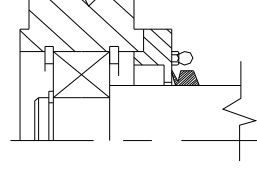
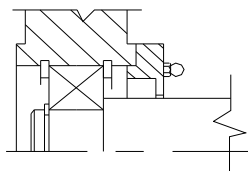
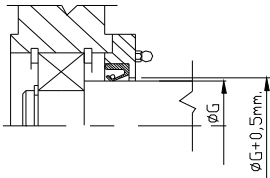
Ball-bearings - Roll
= not included
Kugellager =
nicht im Lieferumfang
enthalten

Standard solution
with sealing ring /
Standardauführung mit
Dichtungsring

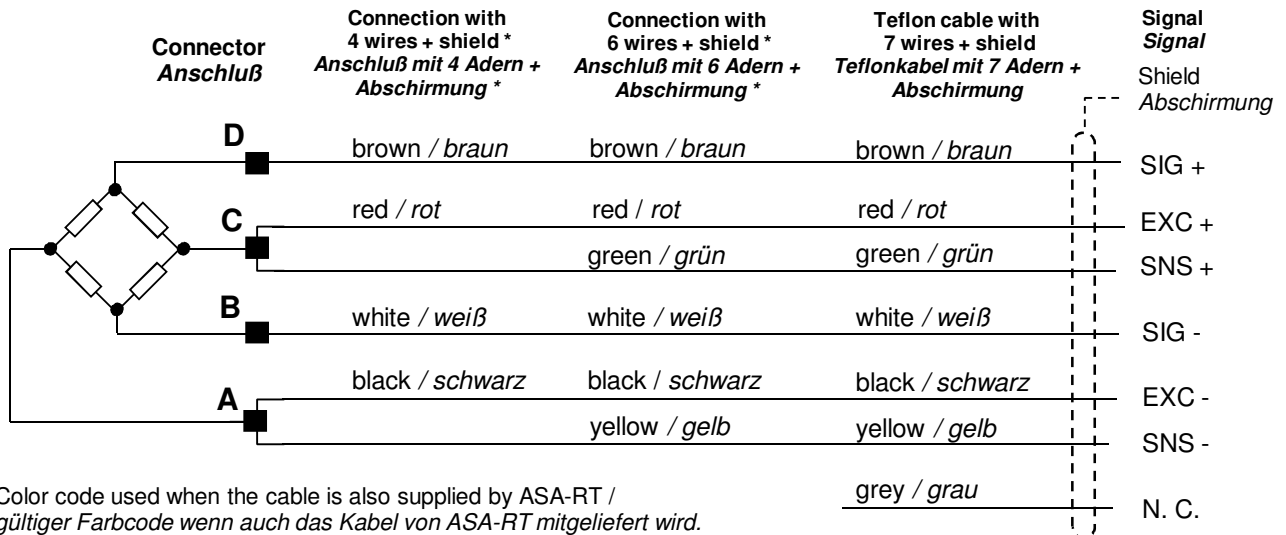
The user can remove
the seling ring /
Der Dichtungsring
kann entfernt werden

The user can remove sealing ring
and locate V-ring /
Der Dichtungsring kann gegen
einen V-Ring ausgetauscht werden

Automatic greasing /
Automatische Schmierung



ELECTRICAL CONNECTION ELEKTRISCHE ANSCHLÜSSE



ORDER CODE BESTELLCODE

